

| Standard executions | | |
|-----------------------------------|--------|---------|
| Version | Symbol | Type |
| Female clevis with clip | | FF..CN |
| Female clevis with pin and seeger | | FFP..CN |
| Female clevis body only | | FFN..CN |
| Male clevis with pin and seeger | | FM..CN |
| Male clevis body only | | FMN..CN |



Clevis conforming to CNOMO standards.

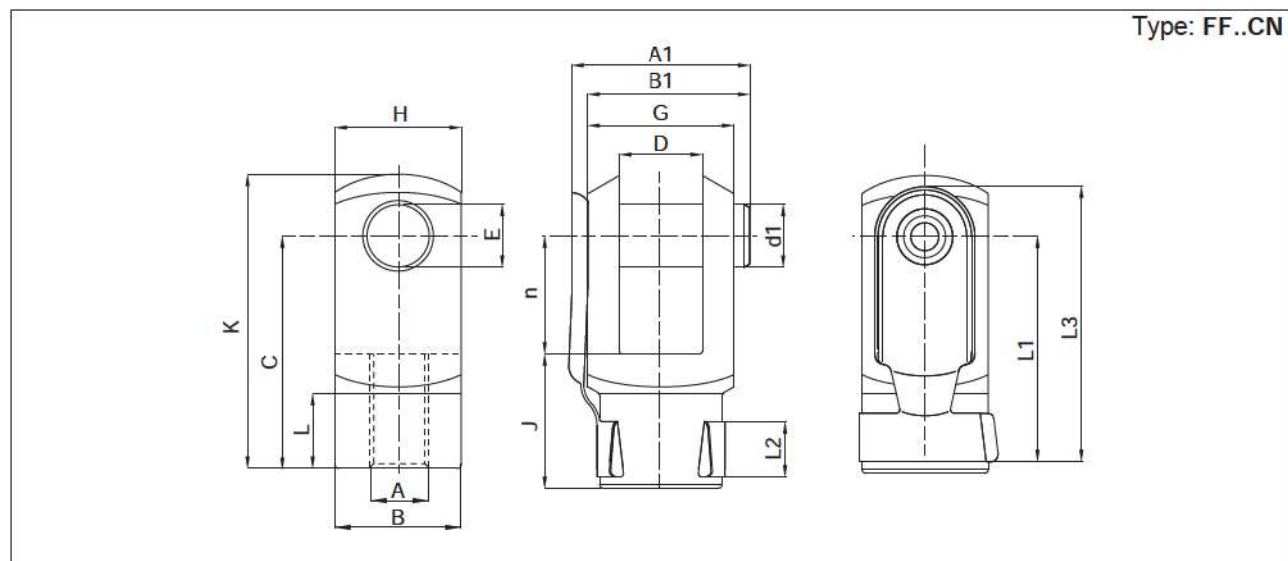
The female clevis FF..CN version is provided complete with clips, the FFP..CN version is provided with a pin and 2 seegers, while the FFN..CN version is provided only the clevis body.

The male clevis FM..CN version is provided complete with a pin and 2 seegers, while the FMN..CN version is provided only the clevis body.

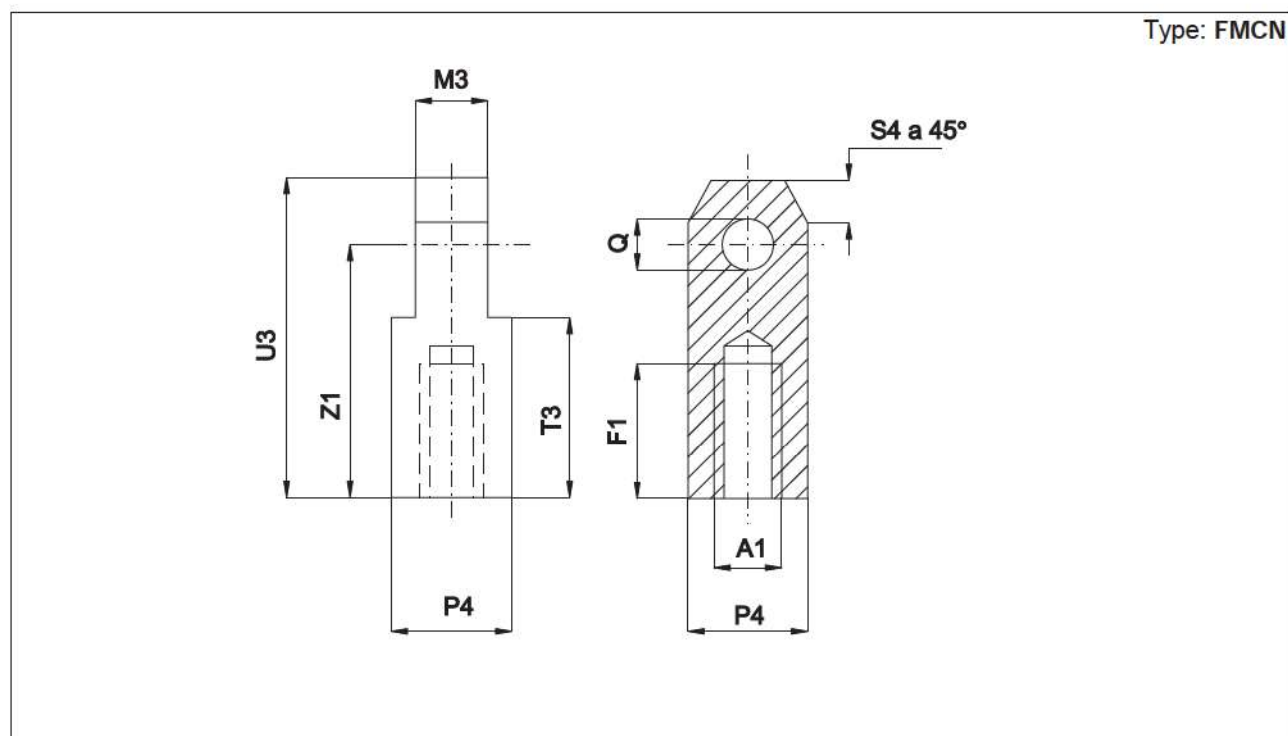
The clevis is mounted on the cylinder rod and allows a swinging movement.

| Options | Suffix |
|-----------------------------|--------|
| Special versions on request | / S |

| Technical data | |
|----------------|-------------------------|
| Material | White zinc plated steel |



| Code | Item | For cylinder Ø mm | A | A1 | B | B1 | C | DH11 | d1 h11 | Eh8 | G | H | L1 | J | L2 | K | L3 | L | n | Weight (g) |
|--------|---------|----------------------|---------|----|----|----|-----|------|--------|-----|----|----|----|----|----|-----|----|------|----|---------------|
| 041081 | FF10CN | 25-32 | M10x1,5 | 28 | 18 | 25 | 36 | 11 | 8 | 8 | 22 | 22 | 36 | 20 | 10 | 45 | 41 | 14 | 16 | 94 |
| 041082 | FF16CN | 40-50 | M16x1,5 | 44 | 26 | 40 | 51 | 18 | 12 | 12 | 36 | 26 | 50 | 26 | 12 | 64 | 60 | 17 | 25 | 253 |
| 041084 | FF20CN | 63-80 | M20x1,5 | 53 | 34 | 49 | 63 | 22 | 16 | 16 | 45 | 34 | 63 | 30 | 15 | 80 | 74 | 18,5 | 33 | 530 |
| 041086 | FF27CN | 100-125 | M27x2 | 73 | 42 | 69 | 85 | 30 | 20 | 20 | 63 | 42 | 81 | 45 | 19 | 105 | 98 | 30 | 40 | 1110 |
| 041088 | FFP36CN | 160-200 | M36x2 | - | 50 | - | 115 | 40 | 25 | 25 | 80 | 50 | - | 75 | - | 140 | - | 45 | - | 2160 |



| Code | Item | For cylinder Ø mm | A ₁ | F ₁ | M ₃ | P ₄ | Q _{h8} | S ₄ | T ₃ | U ₃ | Z ₁ |
|--------|--------|----------------------|----------------|----------------|----------------|----------------|-----------------|----------------|----------------|----------------|----------------|
| 041041 | FM10CN | 25-32 | M10x1,5 | 20 | 11 | 22 | 8 | 6 | 25 | 45 | 36 |
| 041042 | FM16CN | 40-50 | M16x1,5 | 30 | 18 | 32 | 12 | 10 | 34 | 64 | 51 |
| 041044 | FM16CN | 63-80 | M20x1,5 | 36 | 22 | 36 | 16 | 12 | 41 | 80 | 63 |
| 041046 | FM27CN | 100-125 | M27x2 | 50 | 30 | 45 | 20 | 17,5 | 58 | 105 | 85 |
| 041048 | FM36CN | 160-200 | M36x2 | 70 | 40 | 63 | 25 | 20 | 81 | 140 | 115 |