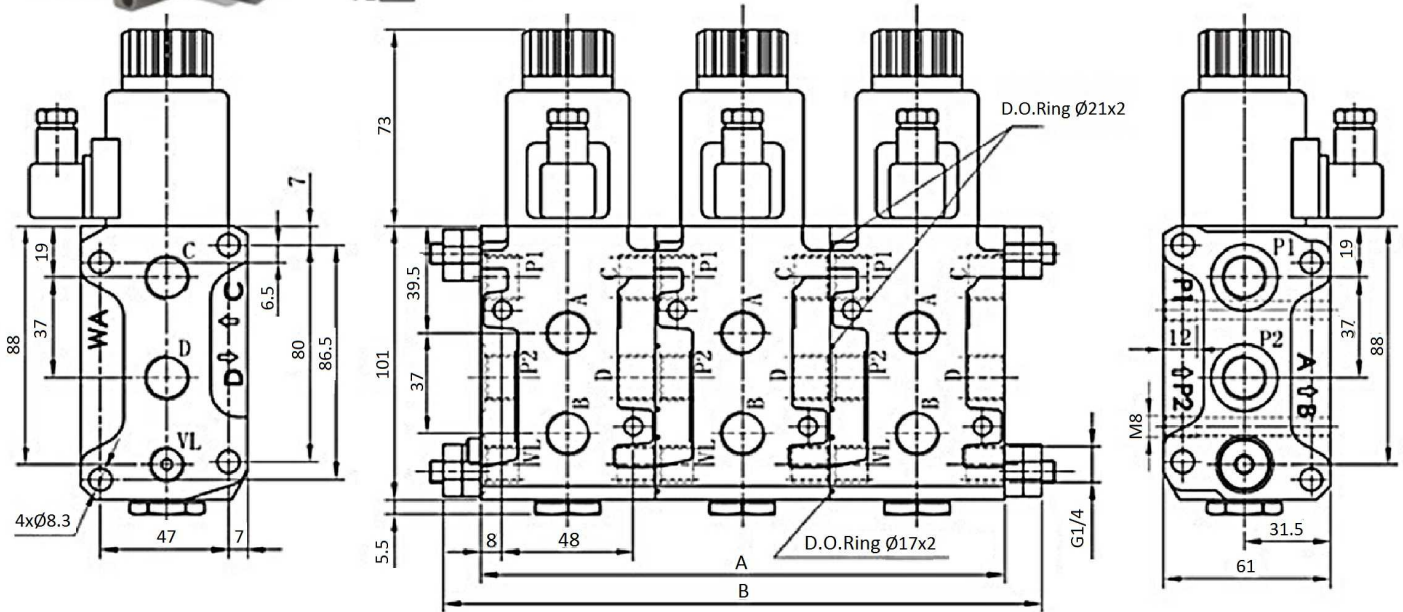
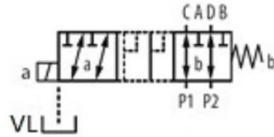


Diverter valves

Stackable diverter valve, 6 ways 3/8 DC

Page: 1/1



**Operating temp:** [-25, +60] °C

**Material:** Body is molten made

**Torque to tight the nucleus:** 35 Nm

**Assembly torque:** 10 Nm

Part n°	R1	N° ways	Voltage (V)	Max. flow (l/min)	Max. Press. (bar)	N° of elements	A	B
SA6V3812CC-1	3/8" BSP	6	12VDC	50	250	1	64	86
SA6V3812CC-2	3/8" BSP	8	12VDC	50	250	2	128	150
SA6V3812CC-3	3/8" BSP	10	12VDC	50	250	3	192	214
SA6V3812CC-4	3/8" BSP	12	12VDC	50	250	4	256	278
SA6V3812CC-5	3/8" BSP	14	12VDC	50	250	5	320	342
SA6V3812CC-6	3/8" BSP	16	12VDC	50	250	6	384	406
SA6V3824CC-1	3/8" BSP	6	24VDC	50	250	1	64	86
SA6V3824CC-2	3/8" BSP	8	24VDC	50	250	2	128	150
SA6V3824CC-3	3/8" BSP	10	24VDC	50	250	3	192	214
SA6V3824CC-4	3/8" BSP	12	24VDC	50	250	4	256	278
SA6V3824CC-5	3/8" BSP	14	24VDC	50	250	5	320	342
SA6V3824CC-6	3/8" BSP	16	24VDC	50	250	6	384	406

\*\*\* Review attached PDF\*\*\*